

# IMAeVarsity Online courses PROSPECTUS

---

**\* Affiliated to Martin Luther Christian University  
Accredited by Tamilnadu Medical Council for Credits**

---



## Table of Contents

About IMA eVarsity Courses	4
About Martin Luther Christian University	5
<b>About MediSys EduTech Pvt. Ltd.</b>	
MediSys's Product Offerings	6
Program details for Admissions	7
<b>Diploma in Family Medicine (2 years Program)</b>	
<b>Fellowship in Family Medicine (1 year program)</b>	
Introduction	8
Objectives of the Program	9
Program Curriculum	9
Program Duration	9
<b>Fellowship in Diabetes Mellitus</b>	
Introduction	10
Objectives of the Program	10
Program Curriculum	11
Program Duration	11
<b>Fellowship in Primary Care Cardiology</b>	
Introduction	12
Objectives of the Program	12
Program Curriculum	13
Program Duration	13
<b>Fellowship in Primary Care Paediatrics</b>	
Introduction	14
Objectives of the Program	14
Program Curriculum	15
Program Duration	15

## Advanced Diploma in Hospital Management

Introduction	16
Objectives of the Program	16
Program Curriculum	17
Program Duration	17

## Certificate in Primary Care Radiology

Introduction	18
Objectives of the Program	18
Program Curriculum	18

## Certificate in Genetic Counselling

Introduction	19
Objectives of the Program	19
Program Curriculum	20
Examination Pattern	20

## NABH Accreditation for Hospitals

Course at a Glance	21
About the Course	21
Course Syllabus	21
Course Delivery Format	21

## Admission Procedure

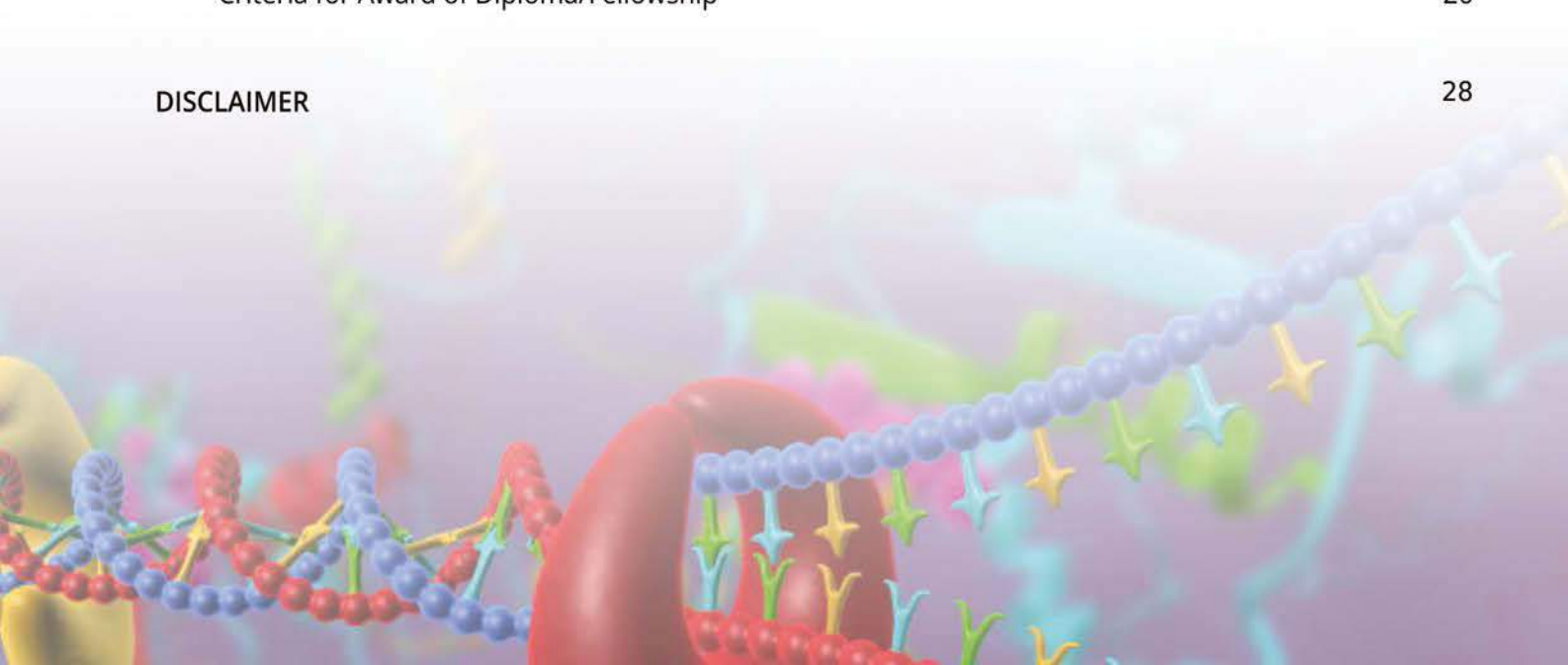
Eligibility	22
Method of Payment	23
Refund Policy	23
Default in paying installments	23
Enrolling in a Course	23
Enrollment Process	24
Program Accreditation	24
Program Delivery	24
MediSys's SmarTeach Online Learning Platform	24
Clinical Rotations	25
Clinical Log Book	25

## Examination Methodology

Pattern & General rules of Assessments and Examinations	26
Criteria for Award of Diploma/Fellowship	26

## DISCLAIMER

28





## About IMA eVarsity

IMA eVarsity is an initiative of Indian Medical Association College of General Practitioners

Indian Medical Association College of General Practitioners was started in the year 1963 by Dr. P.G. Batla, with an intention to provide Continuous Medical Education (CME) to the General Practitioners. Over the last few years, has conducted training programs in General Practice, Diabetes Mellitus, Ultrasonography, Practical Cardiology, Community health, Critical Care and Family Medicine. International programs conducted by includes Post Graduate Diploma in Emergency Medicine, MRCGP International and an International Post Graduate Pediatric Course. More than 2500 doctors have graduated and hence upgraded their skills through these certificate programs. Additionally, thousands have benefited from the CME activities conducted regularly by the IMACGP.

The IMA eVarsity is a virtual university that offers online education to medical graduates through an interactive medium of education taking a leaf from the best practices of distance education from across the Globe. The IMA eVarsity is a joint educational outreach venture, promoted by the Indian Medical Association College of General Practitioners, and MediSys EduTech Pvt. Ltd. that strives to bring the classroom to your home and clinic.

With changing times, the IMA CGP has transformed itself to adopt contemporary modern methods of teaching and learning, leveraging Information and Communication Technologies. The IMA eVarsity brings along the combined experiences and expertise of in the 'brick and mortar education' and MediSys EduTech Pvt. Ltd. in the 'click and mortar education' in the company of distinguished faculty from across the country who have delivered the course predominantly online through the SmarTeach e-Learning platform.

All IMA eVarsity courses are affiliated to a premier university from the North-east of India, viz. the Martin Luther Christian University [MLCU] in Shillong, Meghalaya. It is a UGC approved university serving the cause of education in one of the most difficult terrains in the country, difficult not only in terms of commuting but also in terms of development, while never wavering from the stringency required for the best practices in higher education.

**IMA eVarsity courses are accredited by Tamilnadu Medical Council for Credits for renewal of Medical License. Student of a 6 month course will get 2 Credits, one year course will get 4 Credits and a 2 year course will get 8 Credits. You can use these Credits for renewal of Medical License.**

### **IMA eVarsity**

MA TN State Hqrs Building, Doctors Colony, Via Bharathi Nagar first Main Road,  
Off. Mudichur Road, Tambaram, Chennai – 600 045

'Click and Mortar sessions' is a new nomenclature derived from the emerging technologies in ICT, viz. getting information at the click of the mouse. It is as opposed to Brick and mortar, which is the typical classroom method of distance education that was prevalent across the globe and is still prevalent in many countries even today.



Martin Luther Christian University

## About Martin Luther Christian University (MLCU)

**Martin Luther Christian University** Shillong, Meghalaya is a UGC recognised private university. Martin Luther Christian University commits itself to equip the community and its students with a high quality education that will empower them to graduate as versatile professionals, to serve with purpose, integrity and efficiency everywhere in the world. As global citizens these students will be the leaders' of tomorrow As global citizens these students will provide the leadership for tomorrow.

The university is named after Martin Luther (1483–1546), the father of reformation, the first Christian leader to promote higher education for the general populace.

Martin Luther Christian University was established by ACT No. 11 of 2005 of the Legislative Assembly of Meghalaya and received the assent of the Governor on July 6, 2005. The Government of Meghalaya issued the gazette notification on February 22, 2006. The inception of the university is in accordance with the University Grants Commission Act, 1956 under Section 2(f) and the university is empowered to grant degrees under Section 22 of the UGC Act.

Martin Luther Christian University conduct courses in Management and Commerce Studies, Information Sciences, Social Work, Counseling Psychology, Allied Health Sciences, Tourism Management, Peace Studies, Environment and Traditional Ecosystems, Music and Fine Arts. MLCU has its ampuses in Shillong, Tura, Nongtalang and Jowai.

MLCU has positioned itself as a Development University and places emphasis on job and career-oriented courses. Placement is close to hundred percent and the graduates work all over the Northeast and in other parts of India.

Contact Details :

**Martin Luther Christian University**

Dongktieh, Block - 1, Nongrah, Shillong 793006, Meghalaya

Ph: 8974068427 | Fax: 0364-25064890 | Website: <http://www.mlcuniv.in/>



## About MediSys EduTech Pvt. Ltd.

Medisys is a Hyderabad (India) -based company involved in developing ICT-based teaching and learning aids for medical education.

During its initial phase, the focus was on building comprehensive curriculum-based content for undergraduate medical education, comprising lectures by seasoned faculty, supported by animations, illustrations, power-points, assessment-aids etc. Its offerings could be used in an e-library, a digital classroom; or as a students' learning-aid, on a tablet or pen-drive.

Medisys has been recently working also on case-compilations, faculty workshops, and tutor/demonstrator training programs; and the strategic deployment of telecom.

When integrated with skilling centers, the Company's products can help surmount endemic faculty- deficits in the third world, at least partially.

We have the framework for a 'plug-in' that can make this possibility a reality, and are about to commission at three sites (within medical colleges) outside India.

Amongst other benefits, we anticipate that each college will have consequently increased capacity for additional (new) enrollments by a vast measure. This will have been achieved at budgets that are a minuscule fraction of the capital outlays required in conventional approaches and/or for new colleges.

CME in South Asia had a limited reach and relevance. There was a need to re-imagine Course Design, content development and the overall instruction and assessment approach. Medisys' involvement in CME started with its principled long-term agreement with the Indian Medical Association [IMA]. The objective was to lift the knowledge, self-confidence, and impact that a GP could make in public healthcare.

Medisys pioneered this effort, and the courses it built for IMA have thus become the first ICT-based offerings (in their componentized format) to qualify for CME credits from a Medical Council in India. In their aggregated versions when appropriately combined with some hospital rotations and mentorship programs, they could also lead to University diplomas.

Medisys built a rigorous back-office administration, that not only supported enrollment, query-resolution, commercial transactions and so forth, but also flawlessly handled academic administration including follow-through on assignments, and assessments; and the institutional affiliations and logistics associated with hospital rotations and mentorship programs.

Several new partnerships are on the anvil: they cover hospital chains, medical colleges, pharma companies etc., for collaboratively building new content, and supporting practical training.

The idea of a blended-learning approach, combining many best practices in ICT based offerings with hospital rotations and mentorship initiatives has a compelling logic. It would make CME inexpensive, relevant to context, and universally accessible.

Obviously, process rigor in course administration, and imagination in the deployment of ICT, are vital. The company's LMS (Learning Management System) has been adopted to work alongside the back office, to support not only CME, but also assessment services, test prep and coaching services, on a relatively stand alone basis.

Contact Details:

### **MediSys EduTech Private Limited**

Plot No. 1106/1, 1st Floor, Road No. 55, Jubilee Hills, Hyderabad - 500033, India

Tel: +91-40-23550435, 23550534 | [info@medisysedutech.com](mailto:info@medisysedutech.com)

[www.medisysedutech.com](http://www.medisysedutech.com) | [www.smarteach.com](http://www.smarteach.com)



## Programs Details for Admissions

This prospectus can be downloaded at no cost from our website [www.imaevarsity.com](http://www.imaevarsity.com). All the required details are provided to enable candidates to choose and make an informed decision for enrolling, from a list of programs being offered for the academic year, Please read the Prospectus carefully before enrolling into any program.

### Programs List

List of programs offered by for the year

Present Courses				
No.	Course	Duration	Degree	TNMC Credits
1	Diploma in Family Medicine	2 years	DFM	8
2	Fellowship in Family Medicine	1 year	FFM	4
3	Fellowship in Diabetes Mellitus	1 year	FDM	4
4	Fellowship in Primary Care Pediatrics	1 year	FPCP	4
5	Fellowship in Primary Care Cardiology	1 year	FPCC	4
6	Advanced Diploma in Hospital Management	1 year	ADHM	4
7	Certificate in Primary Care Radiology	6 months	CPCR	2
8	Certificate in Genetic Counselling	6 months	CGC	2
9	NABH Accreditation for Hospitals	3 months	NABH	-

### Program Eligibility

- The courses are open to MBBS Doctors who are registered with the Medical Council of India (the State chapters of Medical Council of India) .
- A student who has been provisionally registered with Medical Council is also eligible to enroll for any of the courses, subject to his/her completion of the Compulsory Rotation of Internship [CRI]. He/She should submit a Photostat copy of the Provisional Registration Certificate. A copy of the permanent certificate should be submitted as soon as the applicant gets the Permanent Registration Number.



## Diploma in Family Medicine, Fellowship in Family Medicine

### Introduction

According to American College of Family Physicians, "Family medicine is the medical specialty which provides continuing, comprehensive health care for the individual and family. It is a specialty in breadth that integrates the biological, clinical and behavioural sciences. The scope of family medicine encompasses all ages, sexes, each organ system and every disease entity".

**World Health Organization (WHO)** defined Family medicine as that specialty of medicine which is concerned with providing comprehensive care to individuals and families and integrating biomedical, behavioural and social sciences. As an academic discipline, it includes comprehensive health care services, education and research.

The specialty of family medicine was created in 1969 to fulfill the generalist function in medicine, which suffered with the growth of sub specialization and fragmentation of personalised health care after World War II.

In the increasingly fragmented world of health care, Family physicians are dedicated to provide comprehensive health care for people of all ages — from newborns to seniors and treating the person as whole. Unlike other specialties that are limited to a particular organ or disease, family medicine integrates care for patients of both genders and all ages, and advocates for the patient in a complex health care system. Family medicine's cornerstone is an ongoing process of patient-physician relationship with the patient viewed in the context of the family and their social surrounding.

A family doctor is a physician who is a specialist trained to provide health care services for all individuals, regardless of age, sex or type of health problem. A family doctor provides primary and continuing care for entire families within their communities; addresses physical, psychological and social problems; and coordinates comprehensive health care services with other specialists as needed. Family doctors may also be known as family physicians or general practitioners, depending on the location of practice.

Dr Margaret Chan, Director-General of the World Health Organization has this to say about Family Medicine and Physicians: A health system, where primary care is the backbone and family doctors are the bedrock, delivers the best health outcomes, at the lowest cost, and with the greatest user satisfaction. She goes on to add: Primary care is our best hope for the future. Family doctors are our 'Rising stars for the future'.

Propelled by such emphatic endorsement of concepts of Family Medicine by the American College of Family Physicians and the World Health Organization, IMA eVarsity is launching its flagship online course, the two-year Diploma in Family Medicine, with the combined experiences of running the course in 'chalk and board' distance education for nearly a decade or so and MediSys nearly for two decades into the field of virtual education.

On completion of the course, graduate doctors would become competent patient-centred clinicians - the Family Physicians, who flourish by building relationship with the patients and family, as envisioned by WHO, rather than treat them as numbers.



## Objectives of the Program

- To develop knowledge needed to diagnose and manage common acute and chronic conditions across all age groups seen in outpatient family medicine settings.
- To develop Clinical and Communication Skills to take accurate histories, perform focused physical exams, develop evidence based differentials, generate cost effective management plans, and communicate those plans effectively with patients in outpatient family medicine settings.
- To develop Skills to integrate preventive care into outpatient practice
- To develop the necessary interpersonal skills required in communicating with patients from varied of backgrounds,as well as the ability to impart appropriate health education wherever necessary.

## Program Curriculum

Semester 1	Semester 2	Semester 3	Semester 4
<b>Family Practice</b> <ul style="list-style-type: none"> <li>- Family practice management</li> <li>- Medical record keeping</li> <li>- Patient education and counseling</li> <li>- Environmental and Occupational health</li> <li>- Ethics and Medico legal issues</li> <li>- Pediatrics</li> <li>- Care of new born</li> <li>- Growth and development</li> <li>- Adoption</li> </ul>	<b>Pediatrics</b> <ul style="list-style-type: none"> <li>- Failure to thrive</li> <li>- PEM</li> <li>- Mental retardation and Speech disorders</li> </ul>	<b>Pediatrics</b> <ul style="list-style-type: none"> <li>- Acute Diarrhoea</li> <li>- Child with abdominal pain</li> <li>- Hepatomegaly</li> <li>- Child with a Heart murmur</li> </ul>	<b>Pediatrics</b> <ul style="list-style-type: none"> <li>- Anemia in child</li> <li>- UTI in children</li> <li>- Child with wheeze</li> </ul>
<b>Obstetrics and Gynecology</b> <ul style="list-style-type: none"> <li>- Pelvic Pain</li> <li>- Adnexal mass</li> <li>- PID</li> </ul>	<b>Obstetrics and Gynecology</b> <ul style="list-style-type: none"> <li>- Amenorrhea and Menorrhagia</li> <li>- Menopause and HRT</li> <li>- Normal Labour</li> <li>- Abnormal Labour</li> </ul>	<b>Obstetrics and Gynecology</b> <ul style="list-style-type: none"> <li>- Overview of Vaginitis</li> <li>- Screening for Malignancy in Female</li> <li>- Disorders of Micturition in Female</li> <li>- Cervical Cancer</li> </ul>	<b>Obstetrics and Gynecology</b> <ul style="list-style-type: none"> <li>- Infertility and management</li> <li>- Contraception</li> <li>- MTP</li> </ul>
<b>Medicine and Allied Subjects</b> <ul style="list-style-type: none"> <li>- Cardiology</li> <li>- Endocrinology</li> </ul>	<b>Medicine and Allied Subjects</b> <ul style="list-style-type: none"> <li>- Gastrointestinal System</li> <li>- Genitourinary System</li> <li>- Hematology</li> <li>- Joints/immune System</li> </ul>	<b>Medicine and Allied Subjects</b> <ul style="list-style-type: none"> <li>- Infections &amp; Infestations</li> <li>- Medical emergencies</li> <li>- Neurology</li> </ul>	<b>Medicine and Allied Subjects</b> <ul style="list-style-type: none"> <li>- Respiratory system</li> <li>- Psychiatry</li> <li>- Radiology</li> <li>- Dermatology</li> </ul>
<b>Surgery and Allied Subjects</b> <ul style="list-style-type: none"> <li>- General Surgery</li> </ul>	<b>Surgery and Allied Subjects</b> <ul style="list-style-type: none"> <li>- General surgery</li> <li>- Oto-rhino-laryngology</li> </ul>	<b>Surgery and Allied Subjects</b> <ul style="list-style-type: none"> <li>- General surgery</li> <li>- Ophthalmology</li> </ul>	<b>Surgery and Allied Subjects</b> <ul style="list-style-type: none"> <li>- General Surgery</li> <li>- Orthopedics</li> </ul>

### Program Duration

The duration for the Diploma Course is two years and for the Fellowship Course is one year.



## Fellowship in Diabetes Mellitus

### Introduction

India leads the world with largest number of diabetic subjects earning the dubious distinction of being termed the “Diabetes capital of the world”. The latest global figures on diabetes released by the International Diabetes Federation (IDF) has raised a serious alarm for India by saying that nearly 52% of Indians aren't aware that they are suffering from high blood sugar. India is presently home to 65 million diabetics, second only to China which is home to 98.4 million diabetics. By 2030, India's diabetes numbers are expected to cross the 100 million mark.

Due to these sheer numbers, the economic burden of diabetes in India is amongst the highest in the world. The real burden of the disease is however due to its associated complications which leads to increased morbidity and mortality. WHO estimates that mortality from diabetes, heart disease and stroke costs about \$210 billion every year in India and is expected to increase to \$335 billion in the next ten years.

IMA eVarsity has launched the Fellowship program in Diabetes Mellitus to equip the doctors with the latest, clinically relevant information in the field and it will give them a detailed insight into the disease, its complications and its management.

### Objectives of the Program

The One year Fellowship in Diabetes Mellitus aims at preparing you as a generalist doctor with comprehensive up-to-date knowledge in the management of Diabetes that allows you to confidently deal with routine problems of Diabetes in your clinical practice. During the course the candidates will be trained in different aspects of the inpatient and outpatient care for diabetes. They will also be exposed to the management of various diabetes complications; through postings in the diabetic, eye, heart, foot clinics and intensive care. At the end of the Course the candidate will be fully competent to deal with any type of diabetes patient as well as with diabetes complications of any degree of severity.

After completion of the Program the student will be able to do

- Screening and diagnosis of diabetes.
- Treatment of diabetes: Oral Hypoglycemic Agents and Insulin with latest developments.
- Complications of diabetes and its management

## Program Curriculum

### Semester 1

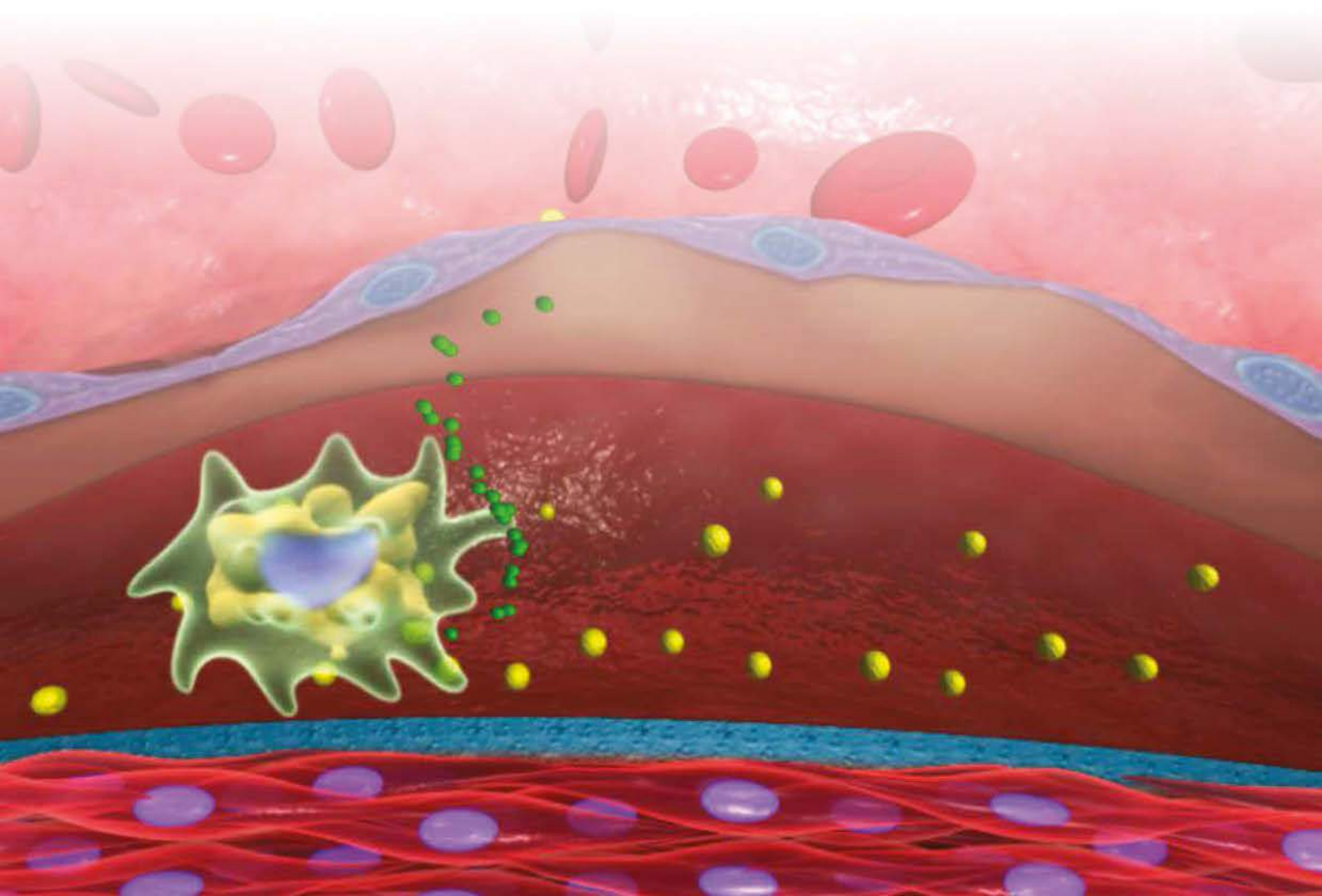
- Applied Anatomy
- Physiology and Biochemistry of Endocrine Pancreas
- Carbohydrate Metabolism
- Epidemiology of Diabetes
- Pathophysiology of Diabetes
- Classification and Types of Diabetes
- Evaluating a Diabetic Patient
- Investigations and Monitoring
- Non Pharmacological Management

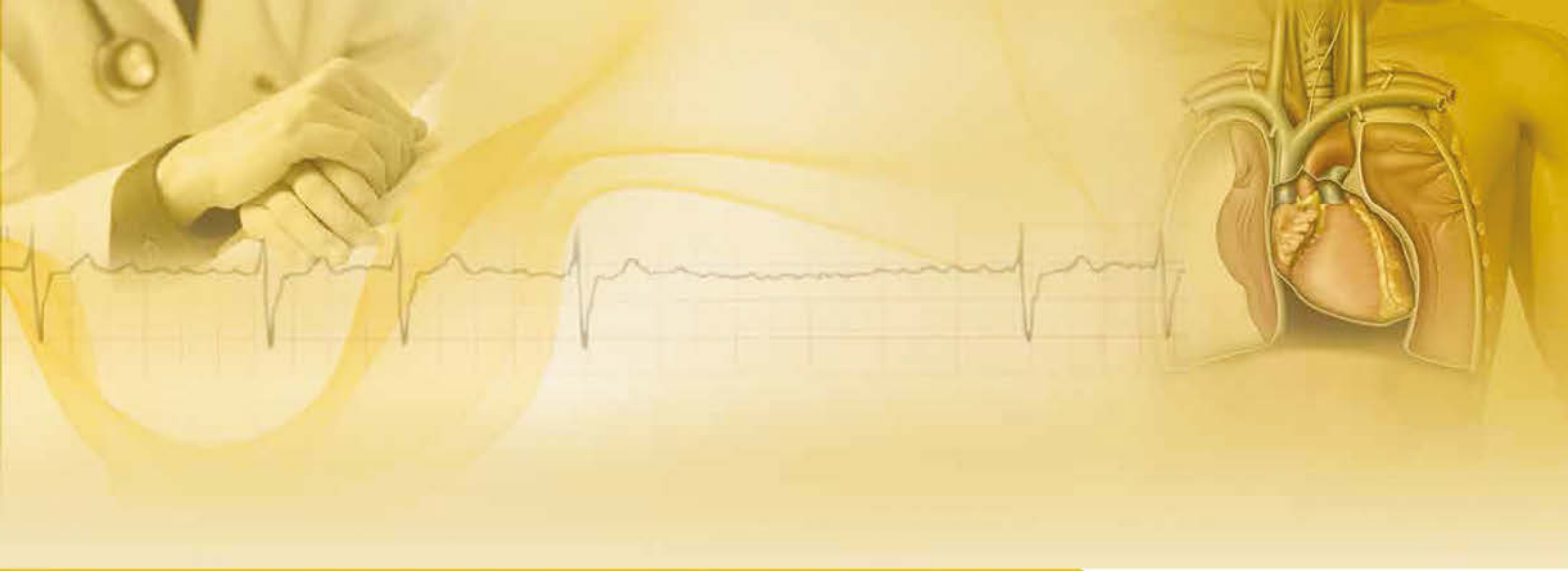
### Semester 2

- Pharmacological Management
- Diabetes Management in Elderly
- Diabetes Management in ICU, CCU and in Surgeries
- Diabetes in Pregnancy
- Complications of Diabetes
- Emergencies in Diabetes

### Program Duration

The program duration for the Fellowship in Diabetes Mellitus is one year.





## Fellowship in Primary Care Cardiology

### Introduction

With the restructuring of health care in India, one of the major changes in patient care has been a shift from sub-specialty care to primary care. Despite major progress in the development of effective therapies to reduce mortality and morbidity from cardiovascular disease, it is becoming the leading cause of mortality in India, where heart ailments have replaced communicable diseases as the biggest killer. According to recent data, approximately 30 percent of the urban population and 15 percent of the population living in rural areas, suffer from high blood pressure and heart attacks. According to government data, the prevalence of heart failure in India due to coronary heart disease, hypertension, obesity, diabetes and rheumatic heart disease, ranges from 1.3 to 4.6 million, with an annual incidence of 491,600-1.8 million.

Although effective treatments exist, there is a wide therapeutic gap between guidelines and practice. Reducing this gap has the potential to save lives. General Practitioners are at the forefront of assessment, management and follow-up of patients with cardiovascular disease. Over 50 percent of the patients suffering from a heart attack die before they reach the hospital. General Practitioners can play a very important role in saving these lives.

IMA eVarsity has launched the Fellowship in Primary Care Cardiology to equip such first-consult doctors, with the latest clinically-relevant information, and to mentor them in competently handling all aspects of cardiovascular disease

### Objectives of the Program

The One year Fellowship in Primary Care Cardiology aims at providing a General practitioner with comprehensive up-to-date knowledge and skills in the prevention, diagnosis and treatment of cardiovascular disease in their clinical practice.

At the end of this course, the General Practitioner will be able to provide better patient care through an increased ability to:

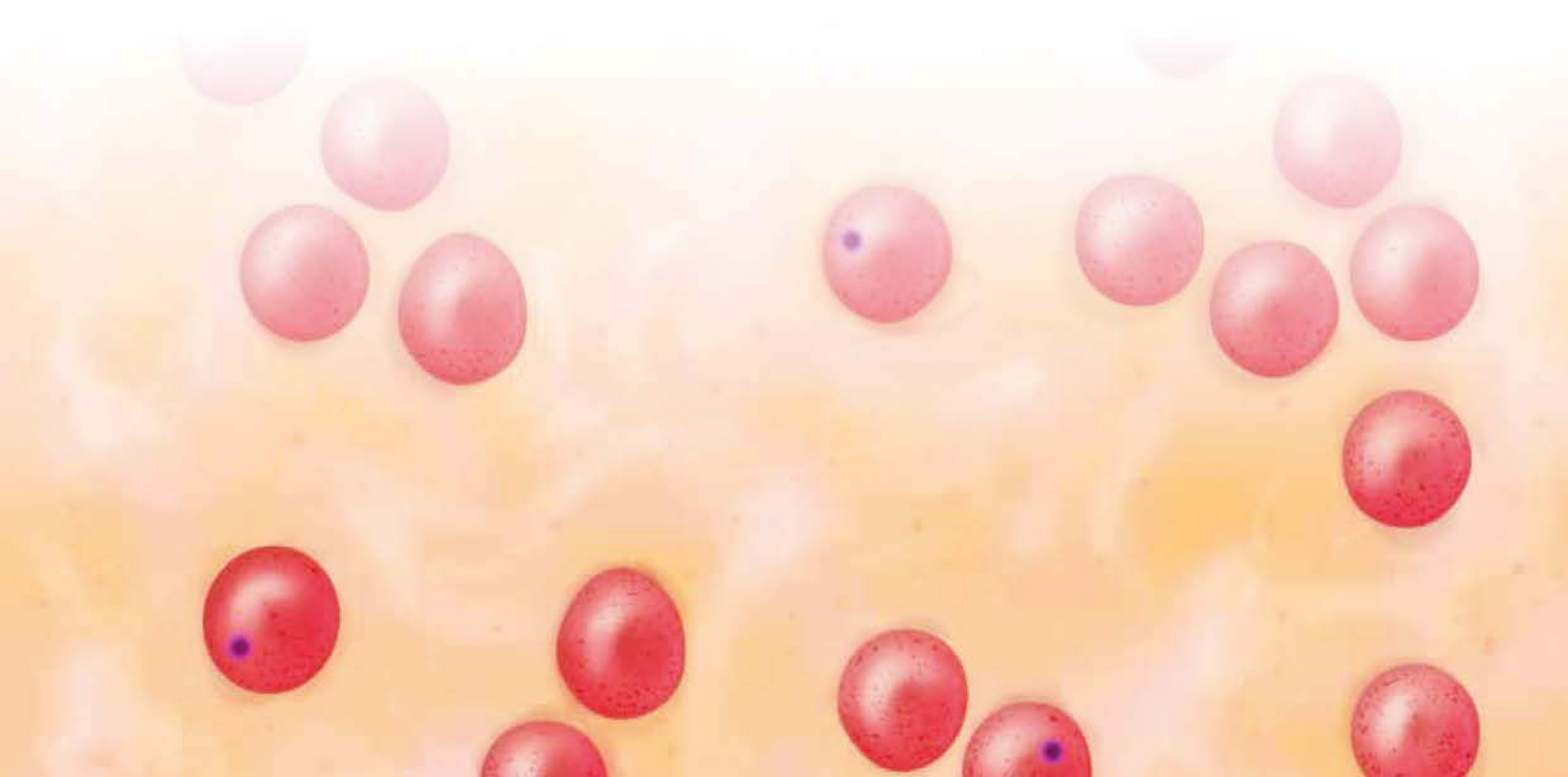
- Identify risk factors for development of coronary artery disease (CAD) and advise optimum primary prevention measures
- Understand various testing options and data on screening studies for CAD and how to apply this information to the management of patients at risk for CAD
- Evaluate patients with essential hypertension, malignant hypertension and secondary hypertension.
- Provide primary care and follow up of patients with various Cardiovascular diseases
- Identify congenital cardiac diseases in children, and initiate management strategies for such.
- Determine when to refer the patient to a Cardiologist/other specialist.

## Program Curriculum

- Applied Anatomy and Physiology
- Epidemiology of CVD and Preventive Cardiology
- Electro Cardiogram
- Hypertensive Disorders
- Pulmonary Embolism
- Rhythm Disorders
- Rheumatic Heart Disease
- Valvular Heart Disease
- Coronary Artery Disease
- Congenital Heart Disease
- Pediatric Cardiology
- Pericardial Disease
- Myocardial Diseases
- Vascular Diseases
- Cardiac Failure

## Program Duration

The program duration for the Fellowship in Primary Care Cardiology is one year.





## Fellowship in Primary Care Paediatrics

### Introduction

According to WHO, almost 19,000 children under five years of age are dying every day across the world. India tops the list of countries with the highest number with around 18 lakh such deaths annually. For India, despite it being one of the fastest growing economies, there has been no visible pattern between per capita income growth and the rate of reduction of child mortality rates. One-third of all malnourished children live in India. Of the 26 million children born in India every year, approximately 1.83 million children die before their fifth birthday. More than two-thirds of the infants die in the very first month of life. Ninety per cent of these deaths are due to easily preventable causes like pneumonia and diarrhea.

Every child has the right to survive. We can reduce the numbers of children dying from easily preventable causes. Most of the children who die each year could be saved by low cost, evidence-based, cost-effective primary care practices such as vaccines, antibiotics, micronutrient supplementation, insecticide-treated bed nets, improved family care and breastfeeding practices, and oral rehydration therapy. These low cost primary care interventions could reduce neonatal mortality by up to 70 per cent. General Practitioners have a very important role to play in reducing the neonatal mortality.

To address this important problem, IMA eVarsity has launched the Fellowship in Primary Care Paediatrics to equip General Practitioners with the latest clinically relevant information, and to mentor them in competently handling all aspects of paediatric disease.

### Objectives of the Program

The One year Fellowship in Primary Care Paediatrics aims at providing a General practitioner with comprehensive up-to-date knowledge and skills in the prevention and diagnosis and treatment of paediatric disease in their clinical practice.

At the end of this course, the General Practitioner will be able to provide better primary paediatric care. They will acquire the following knowledge and skills:

- Ability to integrate current information on any aspect of primary care pediatrics into general practice.
- Ability to communicate effectively and empathetically with children of different ages and their families: both to get complete, accurate histories, and to explain clinical findings and treatment plans.
- Ability to perform the physical examination of children – how to interpret vital signs at different ages, how the pediatric evaluation is different from the adult examination.

- Ability to chart the weight, height, head circumference & BMI; and to recognize obesity or failure to thrive .
- Capacity to advise mothers regarding Breast-feeding issues
- Educate families about prevention: including immunizations, safety, violence, sex, and substance use.
- Use of the immunisation chart,& to know what immunizations a child needs at a given age.
- Calculation of drug dosages for a child based on body weight and age
- Capability to recognize the critically ill child, and when to refer to a specialist.
- Ability to Diagnose, prevent and manage common pediatric conditions..

### Program Curriculum

- Growth and Development and its disorders.
- Adolescence and its problems
- Fluid and Electrolyte Imbalance in Children
- Nutrition in Children
- Newborn infants
- Infections, Immunity and Immunization
- Various systemic diseases in children
- Childhood Malignancies
- Genetic Disorders
- Inborn Errors of Metabolism
- Pediatric Emergencies and Critical Care
- Pediatric Procedures
- IMNCI and Rights of Children

### Program Duration

The program duration for the Fellowship in Primary Care Paediatrics is one year.



## Advanced Diploma in Hospital Management

### Introduction

Among the top professions, Health Management occupies an eminent place. Increasing awareness in all traditional sectors associated with providing healthcare: government and private sector and trusts has resulted in a constant effort to improve healthcare delivery in their respective domain. More so, as healthcare management is becoming increasingly a domain of the private sector, there is a growing need for skillful doctors, nurses and para-medics and, indeed, efficient hospital managers and administrators.

The medical doctors and nurses have been known for their empathy towards hospitals but the growing emergence of healthcare as a profession has drawn even those who did not have a fascination for hospitals and healthcare activities. Hospitals and healthcare providers wholeheartedly opened their doors to non-medicos who had an eye for detail and a flair for organisation for pursuing a career in Hospital Management.

Ever increasing number of private hospitals, clinics, diagnostic centres with a no-compromise emphasis on quality of health care and patient satisfaction have led to an extra ordinary need for persons with a professional qualification in Hospital Management. Both medical and non-medical persons can opt for the course leading to Advanced Diploma in Hospital Management.

Advanced Diploma in Hospital Management [ADHM] acquaints graduate and post graduate doctors or students from other streams with some of the core areas relating to their scope of activity in healthcare: Management Process & Organisational behaviour, Marketing, Basic Accounting, Economics, Finance, IT/HIS., Analytics, HR., Hospital Planning, Quality, OR., Epidemiology & Public Health, HOM, Laws & Ethics and Insurance.

### Objectives of the Program

The one year course leading to Advanced Diploma in Hospital Management (ADHM) aims at imparting knowledge in key areas of Hospital Management. The course can be pursued by student members of the IMA-CGP (Indian Medical Association, College for General Practitioners) and other aspirants with graduation or post graduation degrees preferably from the sciences or engineering streams. On completion of this course, the student will be able to pursue a career in hospitals, healthcare verticals of IT companies and healthcare consultancies. They will be able to pursue further education in the field of healthcare management.



# Program Curriculum

## Semester 1

### Cluster I

- Management Process & Organizational Behaviour
- Healthcare Marketing
- Basic Accounting for Healthcare Professionals
- Health Economics

### Cluster II

- Finance for Healthcare Professionals
- Healthcare IT
- Analytics for Healthcare Professionals [Statistics + Research Methodology + Statistical Software (Excel)]

## Semester 2

### Cluster I

- Human Resource Management in Hospitals
- Essentials of Hospital Planning and Administration
- Hospital Operations Management (TQM, Six Sigma, Certifications/Accreditation)
- Operations Research for Healthcare

### Cluster II

- Epidemiology & Public Health
- Quality Management in Healthcare
- Healthcare Laws
- Healthcare Insurance

## Program Duration

The program duration for the **Advanced Diploma in Hospital Management** is one year.

## Examination Pattern

The assessment for qualifying for the course leading to Advanced Diploma in Hospital Management (ADHM) shall be as per following break-up:

- Each Cluster shall be assessed for 100 marks
- Four clusters, each of 100 marks shall together be for 400 marks
- The internship and the dissertation shall be assessed for 50 marks each.



## Certificate in Primary Care Radiology

### Introduction

General practitioners and family physicians who are the first point of medical contact are very important for the health of a community. However commercialization, corporatization, specialist reductionist approach to health and increasing patient awareness and medico legal litigations have made general practice difficult. Investigations are increasingly being ordered in defense against law suits apart from diagnostic purposes. Radiology and imaging given its intrinsic quality of being non invasive and informative and they are one of the most prescribed investigations.

In such a scenario General Practitioners should be abreast with the relevant knowledge in Radiology. Busy practitioners find it difficult to take time away from their busy schedules for this and here is where continuous online medical education comes in handy and makes such doctors' lives easy.

Recognizing this potential, IMA eVarsity has designed the six months certificate course in Primary Care Radiology, which imparts adequate knowledge and skills for a busy practitioner.

The course is for those who wish to develop knowledge and skills in Radiology and Imaging and for all those who wish to manage better radiology investigations in their daily practice. The course is run for six months, using a blended approach, comprising of self-paced online education, complimented by case based discussion and graded assessments.

### Objectives of the Program

The aim of the programs is to enhance the knowledge and practical skills of general physicians and family physicians. It prepares you as a clinician, with comprehensive and up-to-date knowledge in specific areas and allows you to confidently deal with patients.

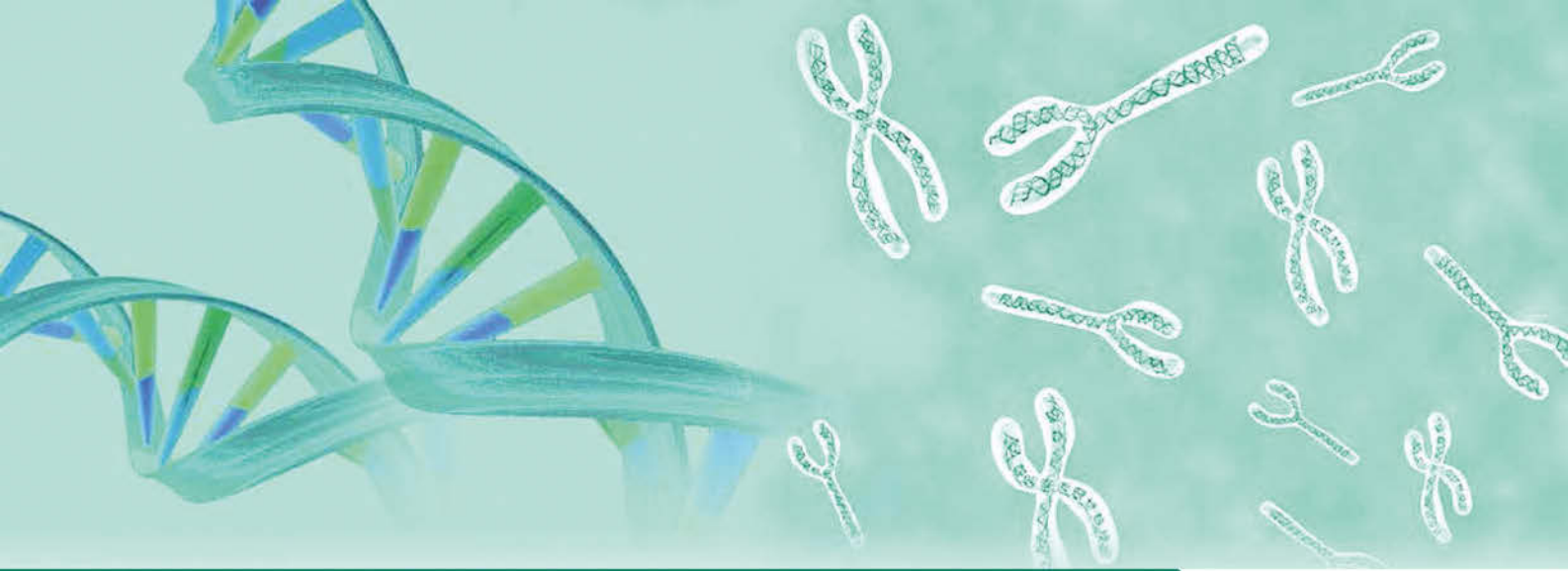
The six months Certificate in Primary Care Radiology aims at imparting basic, simple and yet up-to-date knowledge in Radiology at primary care level. The course hones the skills on when to prescribe imaging investigations, how to interpret them and when to ask for a specialist radiologist opinion.

#### Program Curriculum

- Introduction to Imaging Modalities
- Image Quality Control and Optimization
- Digital Imaging and Telemedicine
- Chest and Pulmonary Imaging
- Cardiac and Mediastinal Imaging
- Musculoskeletal Patterns
- Abdominal and Urogenital Imaging
- CNS and ENT Imaging

#### Program Duration

The program duration for the Certificate in Primary Care Radiology program is six months.



# Certificate in Genetic Counselling

## Introduction

The last few decades we have witnessed an exponential growth in knowledge, catapulting genetics from obscurity to a pre-eminent place in healthcare. New information about causative genes, disease diagnosis and available treatment options for several single gene and complex genetic disorders; as well as several birth defects, are now known making disease diagnosis and treatment easier. It is critical that clinicians learn about these developments and incorporate this knowledge into their practice.

Each and every patient should be able to benefit from individualized therapy based on their unique genetic makeup; however, this can become a reality only when clinicians are able to comprehend the genetics behind the diseases and syndromes. More importantly the implications of these must be explained to the patients and relatives in a professional and compassionate manner. Such education and counseling accompanying genetic testing, is provided by Genetic Counselors in all developed countries; this kind of professional training is being taught for the first time in India for clinicians.

The National Society of Genetic Counselors (NSGC) officially defines genetic counseling as the understanding and adaptation to the medical, psychological and familial implications of genetic contributions to disease. This process integrates:

- Interpretation of family and medical histories to assess the chance of disease occurrence or recurrence.
- Education about inheritance, testing, management, prevention, resources
- Counseling to promote informed choices and adaptation to the risk or condition.

## The contemporary areas where genetic counseling is useful are:

- Congenital / birth defects - Syndromic and non-syndromic
- Mental retardation - Chromosomal and Genetic
- Male and Female Infertility, Spontaneous abortions / Bad obstetric history (BOH)
- Artificial Reproduction Techniques and Pre-implantation genetics
- Neurological disorders - Seizures, Stroke and Psychiatric disorders
- Musculo-skeletal disorders - especially Muscular dystrophies
- Metabolic disorder
- Any Familial Disorder - Eg Thalassemia
- Common adult disorders - Diabetes, Hypertension, Asthma, Cardiovascular diseases,
- Cancer genetics
- Personalized / Individualized medicine
- Stem cell banking and Regenerative Medicine
- Susceptibility to infectious diseases - TB, HPV, HIV
- Others - Deafness, Eye, Skin, Renal and Hematological disorders

## Objectives of the Program

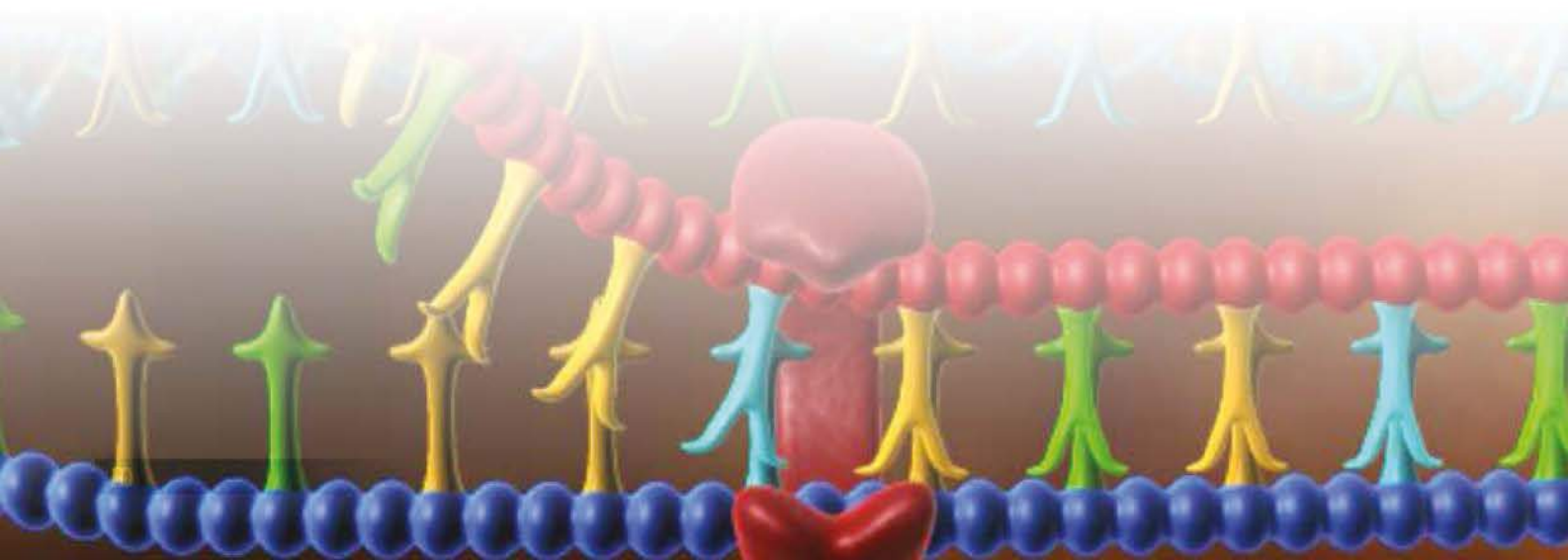
The six months Certificate course aims at imparting Clinicians with basic knowledge in Human Genetics, Genetic basis of disease, therapy and response. On completion of this course, a clinician will not only be able to provide individuals and their families' information about diseases or problems they harbor, but also advise them of appropriate genetic tests and their consequences. They will be able to indicate the potential of gene therapy, individualized medicine and enumerate the risks of occurrence of disease to other family members, both in present and future generations. They will understand the appropriate way to communicate and divulge genetic information using sound ethical and psychological methods.

Program Curriculum	
<b>Cluster 1</b> <ul style="list-style-type: none"><li>- Introduction To Human Genetics</li><li>- Genetics &amp; Inheritance</li><li>- Understanding Genetics at a Molecular Level</li><li>- Psychology &amp; Medical Ethics</li></ul> <b>Cluster 2</b> <ul style="list-style-type: none"><li>- Biochemical Basis of Genetics</li><li>- Microbiology and Genetics</li><li>- Physiology &amp; Genetics</li><li>- Contact Program 1 (Diagnostic tests/techniques)</li></ul>	<b>Cluster 3</b> <ul style="list-style-type: none"><li>- Understanding Applications of Genetics</li><li>- Genetics &amp; Hematology</li><li>- Cancer Genetics</li></ul> <b>Cluster 4</b> <ul style="list-style-type: none"><li>- Cyto-genetic Tests</li><li>- Advanced Molecular Techniques</li><li>- Clinical Genetics</li><li>- Mock Counseling Sessions</li><li>- Contact Program 2 (Clinical cases)</li></ul>
Program Duration	
The duration for the Certificate in Genetic Counseling program is six months.	

## Examination Pattern

The Certificate in Genetic Counseling is worth 500 marks and the break-up is as follows:

- Each Cluster is made up of 100 marks (i.e. 4 clusters x 100 = 400 marks)
  - Block 1 and 2 of each Cluster is for 30 marks
  - Block 3 of each Cluster is for 40 marks
- Both the Contact Programs and the Mock Counseling Session comprise of 100 marks in total





## Certificate Course in NABH Accreditation for Hospitals

### Course At A Glance

**Course:** Certificate course in NABH Accreditation for Hospitals

**Total Duration:** 3 Months

**Medium of instruction:** English

**Fee is:** Rs 10,000/- only

**Eligibility:** MBBS/BAMS/BHMS/BDS/Nursing/MHA/PGDHM/Hospital Administrators

**Certification by:** Indian Medical college of General Practitioners – IMAeVarsity Certification

### About the Course

"NABH" is an acronym for National Accreditation Board for Hospitals & Healthcare Providers is a constituent board of Quality Council of India, set up to establish and operate accreditation programme for healthcare organizations. NABH operates accreditation and allied programs on patient safety and healthcare quality. The standards, evaluation and certifications are based upon national/international norms, through a process of self and external evaluations.

The NABH Accreditation for Hospitals course teaches the process of accreditation of hospitals. It helps the doctors and hospital administrators to understand the accreditation process and achieve NABH accreditation. The course provides additional reading material to understand quality principles, NABH accreditation process and guidelines.

The course provides various sample, manuals, sample forms and process documents, sample incident reporting formats, which helps the internal teams in preparation of their own process manuals or documents.

### Course Syllabus

1. Introduction To NABH
2. Access, Assessment & Continuity of Care (AAC)
3. Care of Patients (COP)
4. Management of Medication (MOM)
5. Patient Rights & Education (PRE)
6. Hospital Infection Control (HIC)
7. Continual Quality Improvement (CQI)
8. Responsibilities Of Management (ROM)
9. Facility management & Safety (FMS)
10. Human Resource Management (HRM)
11. Information Management System (IMS)
12. Documentation Requirements & Implementation Guidelines
13. Accreditation Process
14. Final Assessment

### Course Delivery Format

Taking leaf from Winston Churchill's philosophy of "always ready to learn although ... not always like being taught", IMA eVarsity is transforming medical education by garnering learning empowered by the interactive platform of digital technology. IMA eVarsity model of blended education integrates best practices of 'chalk and board' with emerging technologies, purporting to make mockery of fragmented medical care, that is the bane of the rising costs of health care today!

The IMAeVarsity offers best of the models of blended education through online lectures, with the convenience of self-study at one's own pace, time and place.

A rich learning environment is provided through a Learning Platform with access to:

Online lectures delivered by experts in respective fields. The students can view the lecture any number of times using tools to conveniently play/pause, forward/rewind, skip/review, bookmark  
Included in these lectures are hundreds of text slides, illustrations and appropriate 2D and 3D animations, audios and videos to make concepts easy to understand  
Facility for the student to bookmark specific segments of a running lecture and ability to add your own notes for later review.



## Admission Procedure

### Eligibility

- The courses are open to MBBS Doctors who are registered with the Medical Council of India (the State chapters of Medical Council of India) and are Life members of Indian Medical Association
- For those candidates who are not members of the IMA, they should become Life members of IMA at their local chapters and send the membership details.
- A student who has been provisionally registered with Medical Council is also eligible to enroll for any of the courses, subject to his completion of Compulsory Rotatory Internship [CRI]. student should submit a Photostat copy of the Provisional Registration Certificate and a copy of the Compulsory Internship. As and when student gets the permanent registration number, student should submit the Photostat copy of the Permanent Registration Certificate.



Figure 1: Provisional Registration Certificate



Figure 2: Internship Certificate with the Number

- The student should submit a scanned copy of Internship Certificate with the Number rounded off in red as shown in the Figure 2 [Sample: E13/O.G.H./20 ..... / .....]
- Foreign medical graduates, i.e., from Russia, China, etc., would also be allowed to take up the courses but only after they register themselves with the MCI

## Fee for Courses

Please contact [info@imaevarsity.com](mailto:info@imaevarsity.com)

## Method of Payment

The fee can be paid by any of the following ways:

- (i) Account payee Cheque favouring IMA eVarsity with your name, account number and your mobile number on the back of the Cheque.
- (ii) Demand Draft favouring IMA eVarsity payable at Chennai.

## Refund Policy

IMA eVarsity norms do not allow any refund once the student is enrolled. Once enrolled, the student cannot switch from one course to another or from one batch to the other. Fees once paid cannot be transferred to another candidate even if that other candidate is his own family member. For further details, please refer to the FAQs section on the Website.

## Default in paying Installments

If any student defaults in paying installment at any point of time, following measures will be enforced by the immediately:

- The Academic wing of the IMA eVarsity will stop the weekly-releases immediately.
- Such a student will not be allowed for any further clinical postings – a communication to that effect will go to the hospital Head.
- The student will not be given access to the IMA eVarsity MCQs as part of the (i) week-end graded assessments [WGA] (ii) semester-end graded assessments [SGA] (iii) mid-course graded assessments [MGA] and (iv) Final course-end graded assessments [FGA], depending on the installment which is defaulted.
- The student cannot appear for practical examination and convocation.

If the student fails to pay the installment that is due even by the end of the grace period, it shall be deemed as 'The student discontinued or dropped out'. The student shall not be allowed any further extensions in time and neither would student be entitled to claim the fees already paid.

- The Academic wing will start releasing the weekly releases only when it gets a clearance from the Finance Department.
- No questions will be entertained in this regard either through call to the IMA eVarsity Call Centre or through Email

## Enrolling in a Course

Please visit the Website: [www.imaevarsity.com](http://www.imaevarsity.com)

### Steps to fill-in the Application Form

- Click on the Application Form link and fill-in all the details
- Take a print-out of your completed application form, sign it and send it with following attachments:
  - Passport size colour photograph pasted on the Application Form.
  - Course Fee in the form of Cheque or DD
  - Photocopy of MBBS Degree Certificate
  - Photocopy of Medical Registration Certificate [Permanent Registration Certificate ]
  - Photocopy of the IMA Membership Card [Life Membership]

If the student has not yet got his permanent medical registration with the MCI, student has to attach the following certificates in addition:

- Photocopy of Compulsory Internship Certificate [CRI] with the Number
- Photocopy of Provisional Registration Certificate

## **Application with attachments should be sent to the following address**

### **IMA eVarsity**

Plot No. 1106/1, 1st Floor, Road No. 55  
Jubilee Hills, Hyderabad - 500033, India

## **Enrollment Process**

- The Admission cell of the IMA eVarsity will acknowledge the receipt of Application Form through Email with one of the following comments:
  - Student Enrollment Form (SEF) accepted and student enrollment is confirmed
  - Given information is not sufficient – please send the details in reply mail within 5 working days for us to close the enrollment process.
  - Your CAF has been rejected
- If IMA eVarsity accepts your SEF and enrolls you, you will receive a Welcome mail at your email address within 2 working days.

## **Program Accreditation**

The IMA eVarsity has a vast network of affiliations both National and International for accreditation of its courses. Among them, the prominent ones are the University of Sydney (Australia), the George Washington University (USA), Colombo University (Sri Lanka) and many centres of excellence throughout the country which have great academic and clinical material.

CME course modules offered by the IMA eVarsity are accredited by the Martin Luther Christian University, and are held valid as credits for re-registration of medical practitioners as per the current law of the country. They are available on the IMA eVarsity website with a nominal fee.

## **Program Delivery**

The courses have been crafted meticulously based on best practices in e-learning from across the Globe. The offers best of the models of blended education running through online lectures, with the convenience of self-study at one's own pace, time and place, complemented by online faculty interactions and clinical exposure through hospital rotations.

IMA eVarsity programs are delivered Online through MediSys's SmarTeach Learning platform

## **MediSys's SmarTeach Online Learning Platform**

A rich learning environment is provided through the SmarTeach Learning Platform with access to:

- Online lectures delivered by experts in respective fields. You may view the lecture any number of times using tools to conveniently play/pause, forward/rewind, skip/review and bookmark
- Included in these lectures are hundreds of text slides, illustrations and appropriate 2D and 3D animations, audios and videos to make concepts easy to understand and difficult to forget
- Reading material including Text book and e-Books for each chapter as pdf files; additional reading material would also be suggested as links.
- Facility for the student to bookmark specific segments of a running lecture and ability to add their notes for later review.
- Weekly self-assessment through Multiple Choice Questions (MCQs) from a question bank of over 1,00,000 questions across all subject areas
- Case based discussions, where you will be expected to select two specific cases from the list of clinical cases suggested in the curriculum during the period of compulsory clinical rotation under the guidance of in-house clinician and ensure completeness of the Logbook for the cases decided.
- The shall invite reputed guest faculty to deliver Webinars on selected topics.

Lessons shall be delivered on a weekly basis and once the student completes the module for a particular week by viewing the lecture, completing the reading and the self-assessments student shall get access to the succeeding week's program.



## Clinical Training

The IMA eVarsity has a wide national presence and many eminent doctors and hospitals across the country, not only Government hospitals, but also corporate, private and missionary hospitals extend their unflinching support to the program delivery. Students can have the clinical training in the hospitals where they are already working. The Clinical training arranged in other hospitals may require fee to be paid to that hospital. The Certificate Course in Primary Care Radiology does not have clinical training.

## Clinical Log Book

The student has to maintain a Log book during his clinical training. Every student has to maintain a Clinical Log Book containing details of the work done by him/her during the entire period of training.

*The clinical log book will include:*

- All written work such as assignments, presentations and case scenarios
- Case vignettes and learning points
- Procedures observed/ performed
- Teaching sessions attended or presented
- Personal thoughts and reflections
- Specialist interventions observed or performed

At the time of practical examination, students will be required to produce the log book. In the absence of log book, the result will not be declared. However, a certificate to this effect has to be attached along with the application form for eligibility purposes. The supervisor would also offer his remarks on the training received by the students in the clinical log book. The student's assessment during clinical rotation certified by the authorized hospital and the log book together carry weightage of 15% in the exam grades.



## Examination Methodology

### Pattern & General Rules of Assessments and Examinations

Diploma, Fellowship and Certificate courses have a set pattern for formative and summative assessments/ examinations. The types of evaluations that each candidate would take, include:

- Self Assessments
- Weekend Graded Assessments [WGA]
- Semester-end Graded Exams [SGA]<sup>3</sup>: first semester-end for the 1-year courses and the first, second and the third semester-ends for the 2-year courses.
- Final End-course Graded Exams [FGA]

**Self assessments:** These are scheduled online at the end of every lecture and are neither timed nor graded. These assessments help the candidates to check how much they have grasped the lecture, to know where to re-focus, study, understand and assimilate. They are strongly advised to be taken up, but are not compulsory.

### Evaluation would consist of theory and practical components

**Weekend assessments:** Each week of the course concludes with an online weekend assessment.

Candidates will be questioned on all the topics covered in that week. There are a predetermined number of MCQs to be answered in a stipulated period of time. All the weekend assessments that precede a spell of clinical rotation [CR] have to be completed and submitted before the CR posting. These tests are graded and once submitted cannot be re-attempted for a better score. The scores will be added together towards a Theory formative assessment total.

**Semester-end<sup>3</sup> assessments:** These are graded online assessments, MCQ-type tests, scheduled at the end of every semester. Candidates will be questioned on all the topics covered in that semester. There are a predetermined number of MCQs to be answered in a stipulated period of time. Once submitted, they cannot be reattempted for a better score. The score will carry weightage towards Formative assessment.

Weekend and Semester-end assessments are part of formative assessment of theory, and constitute 60% of final score of Theory.

**Final End-course Graded Exams [FGA]:** The final exam, which is the summative assessment that carries the balance 40% of the weightage for the theory evaluation, is also of the MCQ-type, and will be administered on-line, after completion of the Course curriculum.

<sup>2</sup>The Exam pattern and rules of assessment may change according to the guidelines issued by Board of studies, Martien Luther Christian University and the student will be informed in advance

<sup>3</sup>Semester: 6 months

## Evaluation of Practicals

Formative evaluation: Students have to submit e-logs of clinical cases seen. There will be bimonthly CRs, each of which can be used to log a minimum of 2 cases on-site during the posting. From the possible 6 CRs in a year, a minimum of 10 clinical Case-Logs are submissible for the 1-year Courses, and 20 Case-logs for the 2-yr Course, for Formative evaluation of Practicals; carrying 60% weightage of the total Practical score.

Summative evaluation for Practicals, would consist of problem-based-learning (PBL) format of MCQs Exam, administered online, carrying 40% weightage of the total Practical score.

### **Note: CPR course has no practical component**

Examination Fees: Examination fee of Rs. 2,500/- will be collected in the beginning of the last semester, i.e. in the beginning of the second semester for the 1-year courses and the fourth semester for the 2-year courses.

**Results:** The results will be announced online, and the student can download the results from his/her LMS account.

**Re-Examination:** If a candidate is assessed un-satisfactory for Certification, due to poor evaluation scores, he/she may apply for Re-examination after 2 months of the first attempt. Re-examination Fees would apply.

## Criteria for Award of Diploma/Fellowship

A candidate should satisfy the following criteria for the successful completion of the course:

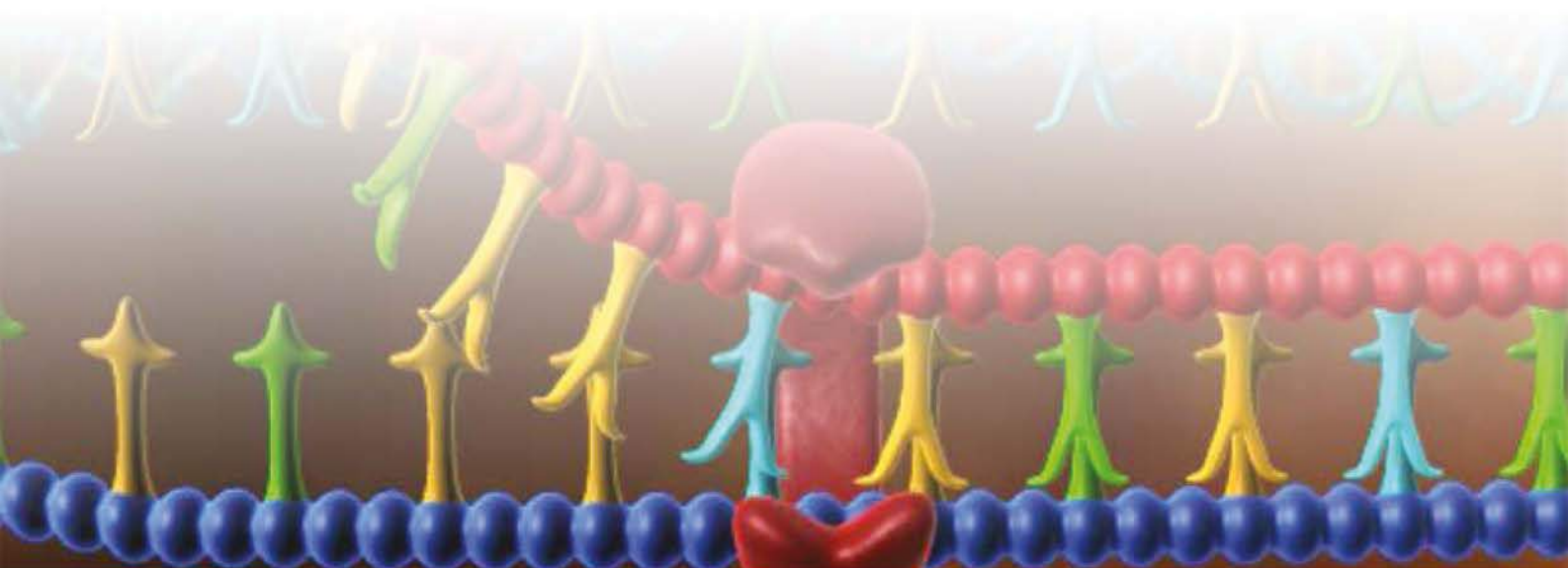
- Adequate and satisfactory Log-Book completion.
- 50 % marks in Total Theory evaluation.
- 50 % marks in Total Practicals evaluation.

**Martin Luther Christian University** will award the Diploma or Fellowship or Certificate to the student after successful completion of the Program.

### **Footnote:**

<sup>2</sup> The examination pattern and rules of assessment may be changed by due process of the MLCU Board of Studies, which would be intimated to students well in advance of its implementation.

<sup>3</sup> Semester=6 months of curriculum





## DISCLAIMER

The information provided in this Prospectus is only for the immediate use of the candidates and does not constitute a legal document. While all efforts have been made to make the information available here as authentic as possible, The IMA eVarsity is not responsible for any inadvertent error or inaccuracy that may have crept in.

The information provided by you is processed and the decision of the IMA eVarsity stands final. Any information withheld or wrongly reported by you may result in cancellation of your admission without notice

The information in the prospectus relates primarily to the session 2015-2016 and every effort has been made to ensure it is correct at the time of the publication. The IMA eVarsity will use its reasonable efforts to deliver the programs as described. The prospectus is prepared in advance of the academic year to which it relates. Although reasonable steps are taken by the to provide the courses and services described, the IMA eVarsity cannot guarantee the provision of any course or facility.

The IMA eVarsity reserves the right for any reason without notice to withdraw or change any of the programs included in this prospectus, to alter tuition or exam fees, entry requirements, course content and syllabus, admission and examination policies, the facilities and/or services available from or provided by or on behalf of the IMA eVarsity.

The IMA eVarsity reserves the right to make changes to its statutes, ordinances, regulations, policies and procedures which the IMA eVarsity reasonably considers necessary (for example, in the light of changes in the law or the requirements of the IMA eVarsity's regulators); to discontinue programs of study or to combine or merge them with others.

The IMA eVarsity strives to keep information stored on its servers up to date, but does not guarantee the accuracy, reliability or currency of the information. Any errors in the information that are brought to our attention will be corrected as soon as possible. The IMA eVarsity reserves the right to change at any time without notice any information stored on the server. This includes information about courses or units of study offered by the IMA eVarsity. The IMA eVarsity accepts no responsibility or liability for the content available at the sites linked from this Website.

If you accept a place on a program, the relationship between you and the IMA eVarsity will be governed by the rules and regulations for students, which include the Student Agreement. The student has to follow the rules and regulations formulated by the IMA eVarsity and he or she is responsible for any consequences in case they fail to comply with the rules.

While the IMA eVarsity takes every care to send the material wherever required by courier, it shall not be responsible for the non-delivery or delayed delivery of the same either for the courier/postal lapse or because of change in the contact address of the student or for any other reason.

Prospective candidates should note that, in the event of any circumstance occurring, the IMA eVarsity cannot accept liability for any complaints or claims for costs, losses or damages made by a student resulting from a service disruption or closure, or any change to, or withdrawal of, a programme/module that he/she had intended to study, or the addition of a new programme.



### **IMA eVarsity**

Plot No. 1106/1, 1st Floor, Road No. 55  
Jubilee Hills, Hyderabad - 500033, India

[info.imaevarsity.com](http://info.imaevarsity.com) | [www.imaevarsity.com](http://www.imaevarsity.com)